



# INSTALLATION GUIDE

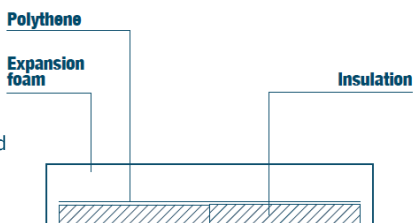
**Staple**

# Staple

Before beginning to install your floor product, ensure that you have considered the location of your Minifold(s), see from page 35 for further information.

## 1 Lay expansion foam and insulation

Lay the expansion foam around the perimeter of the room ensuring the gaiter is facing into the room. Lay insulation in accordance with Building Regulation requirements. Insulation should be laid hard up against the expansion foam with no gaps. The insulation must be suitable to hold the Staples and pipe in place.



Make sure the expansion foam gaiter is resting on top of the insulation.

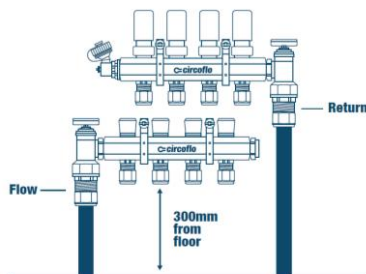
Prior to installing the Staples, the insulation layer may need to be covered with overlapping polythene sheets if using a flow screed, again, the expansion foam gaiter needs to be resting on the polythene. Both the polythene and gaiter may need to be taped up to stop any screed from flowing under the insulation.

## 2 Attaching the Minifold

Attach the Minifold to the wall using the appropriate wall mounting fixings.

You can arrange the flow and return pipework in a variety of ways, depending on what is best for your installation.

The two Minifold arms should be within 500mm of each other to allow for the actuators (with 1500mm of cable) to be connected into the wiring centre positioned close by.



# Staple

## 3 Lay the pipe

Starting at the manifold and working from the edge of the room, lay the pipe in a serpentine fashion, stapling the pipe into the insulation approximately every 500mm with additional staples around the return loops.

Ensure there is enough pipe exposed from the floor to reach the flow and return ports on the Minifold. Don't lay pipe in unheated areas (Such as under kitchen units).

Depending on the grade of insulation, additional staples may be needed.

**Note:** If at any point the pipework is kinked, the coil must be replaced

## 4 Complete the installation

When returning the circuit to the Minifold, cut the pipe with a pipe cutter. Label the pipe flow and return, and number the circuit(s), this will help when connecting to the Minifold(s).

**Note:** Once panels are pipe are laid, protect them with walking boards especially in heavily foot trafficked areas.

Connect the monoblocco connectors on to the ends of the 13.2mm pipe and screw onto the Minifold by hand then further tighten with a spanner whilst maintaining upward pressure on the pipe.

